

GREENING of SCHOOLYARDS

Revitalizing school campuses for all ages to utilize nature connections to expand outdoor learning, diversify play and promote wellness



Presented by:
Jane Tesner Kleiner - RLA, Ecologist, Environmental Educator - Vancouver, Washington
Andy Kleiner - Junior at Hudson's Bay High School

Where are you on the GOSY Journey?

Who is in the room today?

Please join the conversation with your name, organization and role

0 = ???

1 = hmmm, I like nature & want to help

2 = Got our foot in the door, starting conversations

3 = Got some plants in the ground

4 = We have buy in and moving forward

5 = Ready to write the book on GOSY



Today's discussion

- This is a conversation so please join in
- What does a successful GOSY project look like
- Policies / Facilities / Programming
- Top down vs. bottom up approach
- Lessons learned



What does equitable and accessible play, learning and wellness look like

Setting the stage....

- Why do this work?
- For me, it all started with this young man



What does equitable and accessible play, learning and wellness look like

Setting the stage....



- Federal laws/guidelines
- State wide
- Local codes
- District guidelines

- Landscape
- Habitat
- Gathering
- Seating
- Learning features

- Ties to curricula
- School goals
- Recess
- After school
- Health

PLANNING

TOP DOWN

Administrative /
Facilities & Bond
Program
Development

GRASSROOTS

School &
Community driven
projects (Staff,
students, PTA/O,
community)

GUIDING PRINCIPLES

Personalized Learning

A flexible design that can be modified, allowing students to design (and re-design) their environment

Equity and Inclusion

A welcoming, open school that can accommodate the different needs of students and staff

Sustainability and Resiliency

A building that inspires connections to nature and allows access to the outdoors; a design that reflects natural systems and can adapt to future changes

Safety and Security

A home that supports our Wy'east family; a school where kids feel comfortable and safe so they can focus on learning

Community Partnership

An exploratory learning environment that encourages real-world connections

Fiscal Responsibility

A simple, durable school where every space is designed to be a place to learn; the form of the school follows this function

PLANNING

TOP DOWN

Administrative /
Facilities & Bond
Program
Development

GRASSROOTS

School &
Community driven
projects (Staff,
students, PTA/O,
community)

The District



- 5 High schools
- 6 Middle schools
- 21 Elementary schools
- 5 Other facilities
- 22,000 Students
- 3,300 Staff
- 58 Property sq. miles



BOND 2017

- 11 Remodel / expansion projects
- 7 Replacement schools
- 3 New schools
- 8 Upgrades & improvements

5 - Schools replaced serving students with 65+% Free & Reduced Lunch

Design team:

Administration
Architect
Engineer
Landscape architect
Playground designer
Teachers/staff

New: GOSY specialist

Green schoolyards

A new approach to school design
VPS implemented new design standards
to enhance play, wellness and learning
throughout the entire campus

- Strive to meet OSPI Washington Sustainable Schools Protocol
- New features for outdoor learning
- Diverse, inclusive & accessible play elements
- Additional features for student & community wellness

Policy

Benefits of Green Schoolyards

Supporting the various needs of students, staff and community members

- Provide hands-on / project based learning experiences
- Real-world examples for all curricula
- Decrease stress, quiet spaces for rest
- Reduce behavioral problems
- Increase shade for respite and cooler grounds, reduce heat island
- Increase stewardship and conservation opportunities
- Increase social-emotional learning opportunities
- Improve ecological health of schools
-and so much more

PLANNING

Design team:

PTA / PTO
One enthusiastic teacher
Parent volunteer
Community donation
Students / class

New:
GOSY specialist

TOP DOWN

Administrative /
Facilities & Bond
Program
Development

GRASSROOTS

School &
Community driven
projects (Staff,
students, PTA/O,
community)

Harney ES Proposed Master Plan

Slope plantings
This sunny south-facing slope is perfect for planting spring bulbs, flowers and other vegetation. Reduce the lawn area while adding beauty, art and habitat.

Nature Play
Nature Play areas are typically in an area with natural features such as trees, shrubs, flowers and grasses. It provide a variety of low elements to allow a child to explore, dream and imagine. Try to balance crossing a log, jump from stump to stump, stand on a platform. ... your world can shift to "walking across lava fields, being captain of a ship crossing the wide ocean or exploring a land never discovered by a 7 year old."

Outdoor Classroom
Imagine learning where you can feel the breeze, watch the clouds float by and hear the birds sing. Outdoor classrooms can be a calm setting to experience a variety of curriculum. It can vary in size and shape. It should include seating for at least one full class and may include individual seating or bench seating. The feature is accessible to all abilities.

Paved Pathway
A paved path provides access to features as well as a loop for exercise and fun. The path could include fitness stations, benches, stretch stations or learning stations.

Existing access points
Proposed use areas - future development
Proposed path systems

Learn Discover Explore Fun

March 2015

If I haven't convinced you yet.....

Children & Nature Network

childrenandnature.org/schools/

Green Schoolyards America

greenschoolyards.org/covid-learn-outside/

ENHANCING LEARNING

Green schoolyards provide **experiential learning across many subjects.**^{2,3}

33 of 40 school garden studies (83%) found

IMPROVED OUTCOMES
in science, math & language arts.²

BETTER GRADES



HIGHER TEST SCORES



ENHANCED KNOWLEDGE



2, 3, 4

GREEN SCHOOLYARDS CAN ✨ Help students focus attention and regulate behavior^{5,6}
✨ Enhance attitudes and engagement with school^{7,8}
✨ Support creativity, critical thinking and problem solving⁹

HIGH SCHOOLERS WITH VIEWS OF TREES HAD:¹²



HIGHER standardized test scores



HIGHER graduation rates



HIGHER % of students planning to attend a 4-yr college

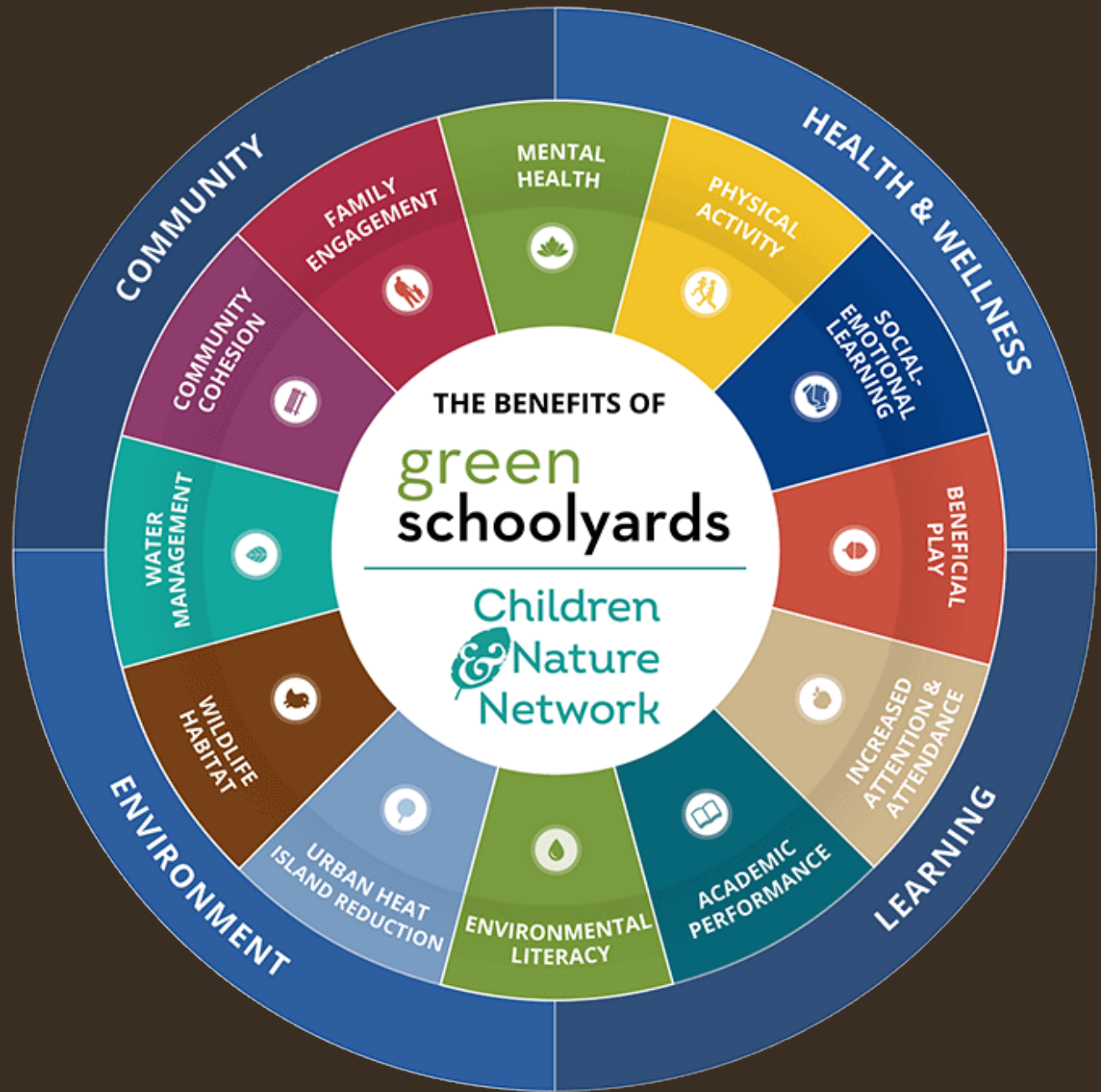
What can these projects do for

EQUITY / INCLUSION

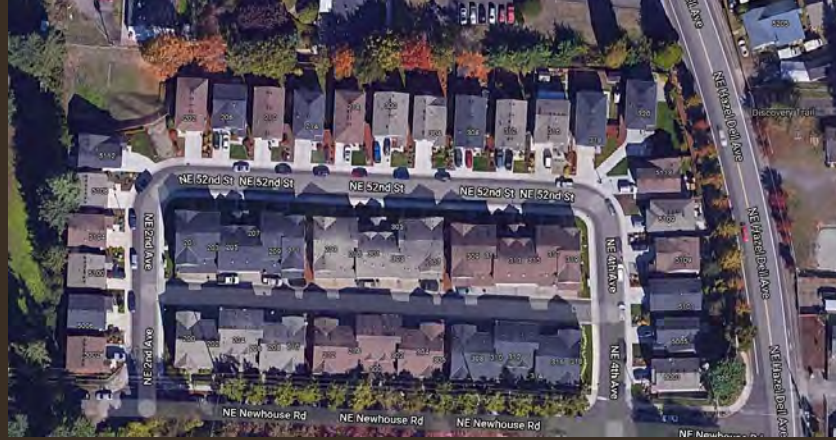
SAFE / WELCOMING

CLIMATE ACTION

COMMUNITY ENGAGEMENT



Where to start....



These students live right next to I-5, ½ mile from school, 1 mile to a park

What do you notice about this school campus?



1. FACILITIES

**Where to
start....**

What do you
notice about
this school
campus

2. PROGRAM



Staff determining
where kids can go
on the school
grounds for safety

Where to start

Maximize use of the entire campus

2015 – 1.5 ac

Today – 3.6 ac
(including all of the trees!)

Program:
12 min. recess



2015
can't visit the tree

Where to start....

Under utilized spaces

Poor drainage

Limited staffing for safety

Not much to do

Inaccessible features



Hough ES –
3 acre campus

In 2012
recess is 1.5 ac
= 522 sf / kid

When it rains =
250sf / kid or
112sf / kid

Program:
20 + 2x @10 min

What are the big Q's?

So you want to start a Green Schoolyard project....

What are the barriers and concerns that you hear when starting GOSY project?

Who is going to take care of it over the summer?

What happens to it when it gets vandalized

Increase maintenance and we don't have staff to care for it

I don't teach outside, so we won't use it

We don't have time

It is not sustainable, won't last

We tell the kids to stop putting bugs in their pockets

Kids are gonna get dirty!



What are the big Q's?

So you want to start a Green Schoolyard project....

What does a successful GOSY project look to you and your community?



Building towards understanding everyone's barriers & concerns to clarify expectations

PLANNING

TOP DOWN

Administrative /
Facilities & Bond
Program
Development

GRASSROOTS

School &
Community driven
projects (Staff,
students, PTA/O,
community)

Superintendent
Facilities
Planning
Grounds
Risk/Liability

Architects
Planners
Engineers
Landscape
Architects



Administration

Principal
Teachers
Staff
Paras
Support



School

Community

PTA/O
Resource Center
Businesses
Env. Educators
Families

Faith Based
Scouts
Neighborhoods
Government

Therapists
Counselors
Specialists
Psychologists



PLANNING

COMMON
LANGUAGE FOR
EXPECTATIONS



BENEFITS



PLANNING

Make site
successful for all
users

Take the “no”
out of
playground use

Inspire students
to be inspired to
seek answers



PLANNING



Inventory campus

Interview
stakeholders

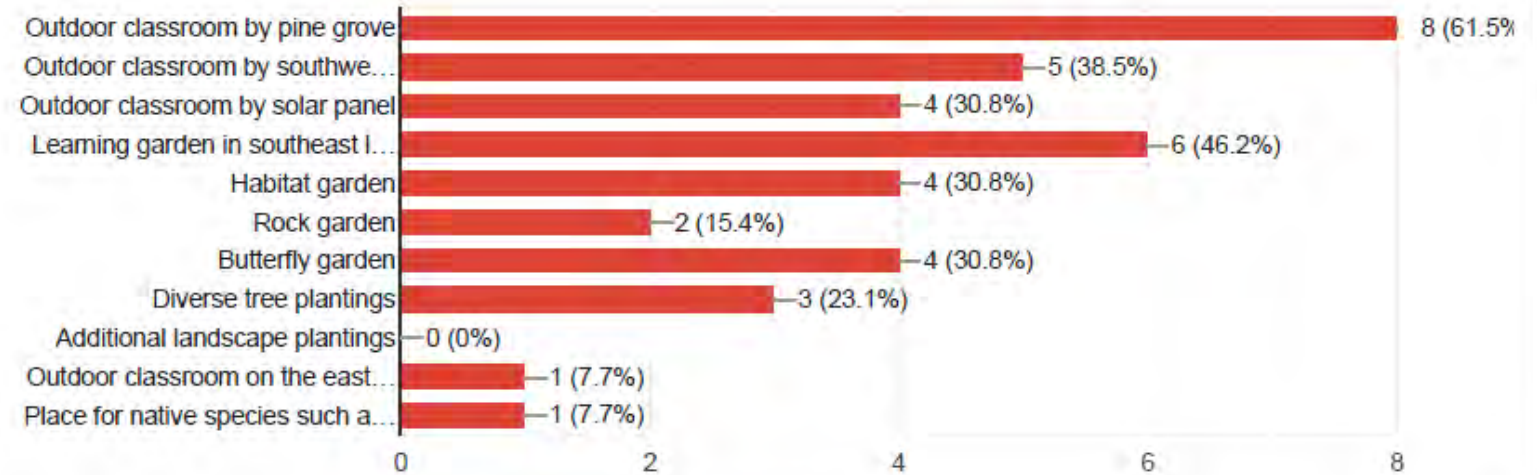
Understand District
do/don't

What is working &
what is not

Tie to school goals

What features do you see as a priority for LEARNING? Pick top three

13 responses



PLANNING

These will always
be on the top of
the list....

Safety

Security

Risk / Liability

Maintenance

(& FUN!!!!)



PLANNING

ZONES

Pathways

Gathering /
Seating

Active Play

Passive Play

Quiet Play

Learning



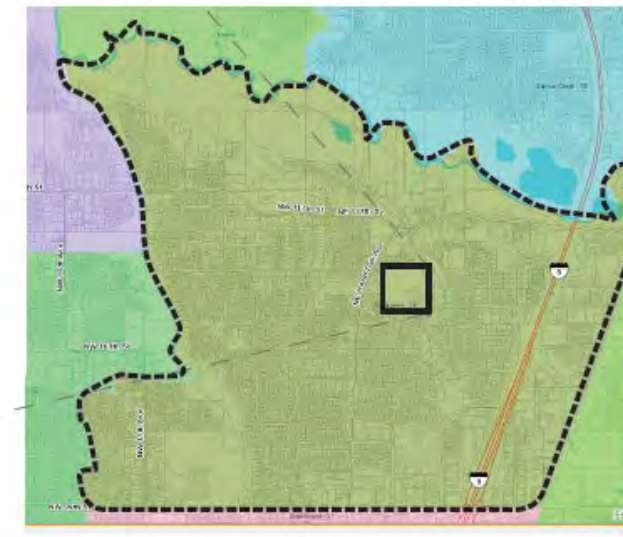
VPS SACAJAWEA ELEMENTARY - SKYHAWKS

- The Sacajawea ES campus is a total of 11.23 acres
- The campus has:
 - 4.5 ac. of grass / lawn
 - 1 ac. of pavement play areas, basketball & playgrounds
 - 1/4 mile paved walking loop
 - Courtyard outdoor learning garden
- Solar panel array
- The school serves K-5th grades with approximately 600 students
- The school is located in the Suds Creek subwatershed of the Salmon Creek Watershed

ZONES OF PLAY

- A. Pavement Play
- B. Covered Play / Active Ball Sports
- C. Swings
- D. Playground Structures
- E. Field sports
- F. Lawn sports fields with backstops

SCHOOL BOUNDARY



SOURCE: GOOGLE EARTH

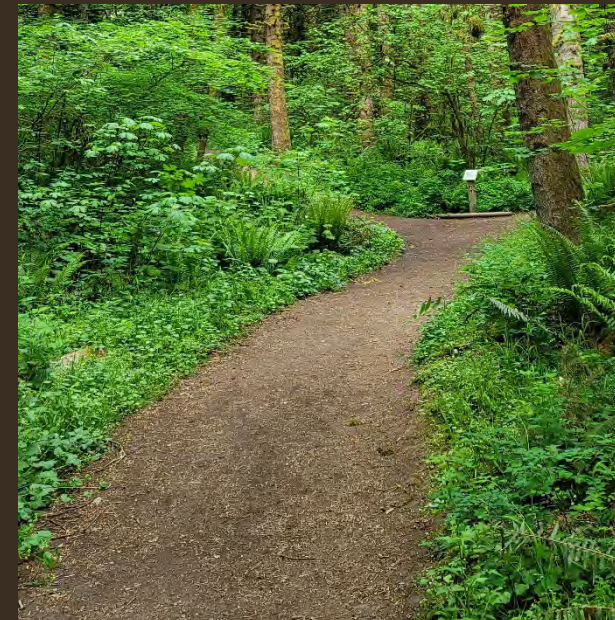
DESIGN COMPONENTS

PATHWAYS

Large Loop
HS & MS – ¼ mile
ES – 1/6-1/5 mile

Short Loops
Walk-a-bouts

Links to destinations



DESIGN COMPONENTS

GATHERING / SEATING

Large group

Small working groups

Conversation spots

Coverings

Event spaces



DESIGN COMPONENTS

PLAY

Active

Passive

Quiet



DESIGN COMPONENTS

LEARNING

Hands-on

Interactive

Engaging

Places to explore,
discover & inspire

Ogden ES views from building



Hough ES seed collecting



Illahee ES PTA Garden Team

DESIGN COMPONENTS

GARDENS

Butterfly

Raised gardens

Flowers

Sensory

Art

Herbs

Stormwater

Meadows

Rock cycle



DESIGN COMPONENTS

Outdoor learning

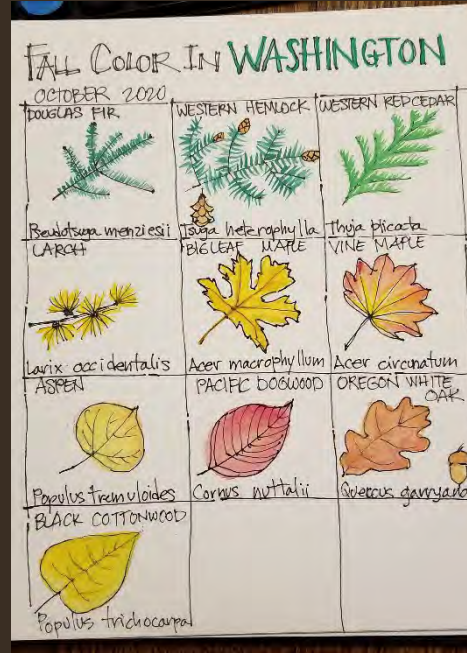
Support learning

Educational Signage

Interpretation

Programming

Special projects



FELIDA ELEMENTARY SCHOOL NATIVE PLANT GARDEN

Welcome to your school garden! Explore and discover the plants and animals that call this garden home.

Vine maple (*Acer circinatum*) **What do you notice?**

How tall are the leaves? How long are the seeds? How many shades of fall color do you see?

Fun facts: Vine maples grow in the shade of tall trees. Seeds are called samaras, lots of wildlife use this plant for food and shelter (deer love it! leaves, squirrels eat it's seeds, & birds eat the flowers that bloom in April). Try this: Take a seed pair and toss it in the air! How does it float down? What about 1 seed, does it float differently?

Western sword fern (*Polystichum munitum*) **What do you notice?**

How many fronds are on the plant? Call you see the spores?

Fun facts: Ferns are some of the oldest species on planet earth over 360 million years old! Ferns are great to grow in shade. They make great habitat for small animals.

Deer fern (*Blechnum spicant*) **Likorice fern (*Polypodium glycyrrhiza*)**

Fun facts: Deer ferns are like to eat. It's ferns, when you rub their antler stubs against it to help heal the wound.

Fun facts: Licorice ferns grow in shady moist areas. This fern can be found growing from clumps of moss on logs. They make great habitat for small animals.

Wood sorrel (*Oxalis* spp.) **Trillium (*Trillium* spp.)** **Slough sedge (*Carex obnupta*)** **Fringecup (*Felima grandiflora*)**

Fun facts: Perennial flowers & grasses (come up every year) provide lots of great habitat and food for wildlife!

ECOSYSTEMS & HABITATS

The species around us need healthy habitat to thrive, including food, shelter, water and places to raise young.

Look at a 1-meter square, how many species do you see? What habitat would you expect to find these species below:

- Raptors
- Crows, Jays, Woodpeckers
- Small mammals
- Songbirds
- Amphibians
- Reptiles
- Insects
- Micro-organisms
- Worms

OVERSTORY LAYER

UNDERSTORY LAYER

SHRUB LAYER

GROUND COVER LAYER

UNDERGROUND LAYER



DESIGN COMPONENTS

Outdoor learning

Incorporating art by students and community



DESIGN COMPONENTS

Outdoor learning

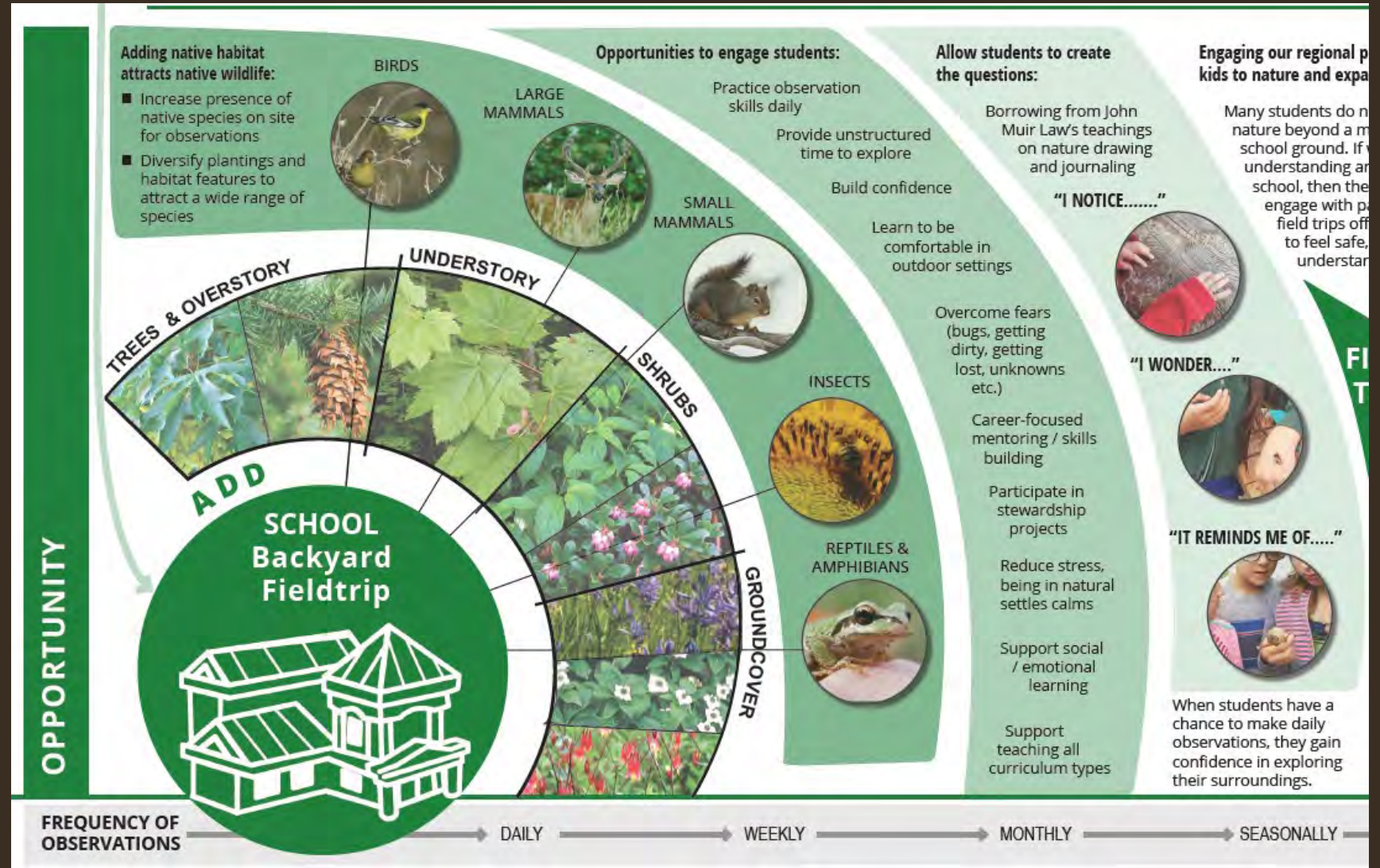
Get kids outside

Every day

Every season

Support their comfort and knowledge

exploring outdoors



Southwest Washington GOSY

Vancouver Public Schools

Hough ES
Harney ES
King ES
Ogden ES
Truman ES
Tangeman Center
Walnut Grove ES
VITA ES
Ruth Bader Ginsburg ES



Southwest Washington GOSY

Evergreen Public Schools

Campus Update Plans
Bond Program
Emerald ES
Sifton ES
Image ES
Marrion ES
Ellsworth ES
Burton ES
Mill Plain ES



Southwest Washington GOSY

Evergreen Public Schools

Campus Update Plans
Bond Program
Emerald ES
Sifton ES
Image ES
Marrion ES
Ellsworth ES
Burton ES
Mill Plain ES



Southwest Washington GOSY

Campus Update Plans

- Support future bond program priorities
- Used for fundraising
- Garner community donations



Figure 5. Pioneer ES campus - proposed updates

NOTES

- See next several pages for more detailed information about all of the proposed features.
- All feature locations are proposed and can be adapted over time to meeting changing needs.
- Summary of new improvements, includes:
 - **Outdoor gathering areas** - Six (6) new areas for outdoor learning destinations including an amphitheater, work table stations, maker space, garden learning spaces, nature/habitat areas
 - **Learning habitats** - lots of new trees, habitat landscape and specialty gardens offer places to plant native and wildlife friendly plantings while offering beauty, features to support curriculum, shade and peaceful settings, while adding over 1 acre of shade.
 - **Diversifying play elements**- new features for play include music stations, climbing elements, new pavement play/games, wall ball, nature play log hoppers, imagination play, swings and covered play options to support play by kids and families of all abilities.
 - **Wellness features** - new pathway loops and connections increase accessible use throughout campus. Other pathways create loops for short walkabouts and access to destinations, such as a new amphitheater and the City's natural area for walking field trips

Southwest Washington GOSY

Other districts
are stepping up

Ridgefield ES – new View
Ridge MS has wetlands

Battle Ground PS –
adding gardens

Camas Schools – adding
outdoor classrooms and
nature play at ES



Southwest Washington GOSY

Addressing MS and HS

- On site habitat
- Greenhouses
- Skills training
- Mentoring of younger students
- Community service partnerships




Stretch break!

What other FACILITIES / CAPITAL features has your district used to engage students and communities

Trivia question:

How many national parks are there in the U.S.?

nationalparks.org/connect/blog/how-many-national-parks-are-there#:~:text=The%20National%20Park%20System%20encompasses,%2C%20American%20Samoa%2C%20and%20



Denali National Park & Preserve - NPS Photo

The National Park System encompasses **423 national park sites** in the United States. They span across more than 84 million acres, with parks in each state and extending into the territories, including parks in Puerto Rico, the Virgin Islands, American Samoa, and Guam.

PROGRAMS

How to
activate the
spaces

Clark County
Green Schools
Inventory

Details | Basemap

Share | Print | Measure | Find

About | Content | Legend

Legend

Battle Ground Public Schools



Camas School District



Evergreen Public Schools



Hockinson School District



La Center School District



Ridgefield School District



Washougal School District



Vancouver Public Schools



Private Schools

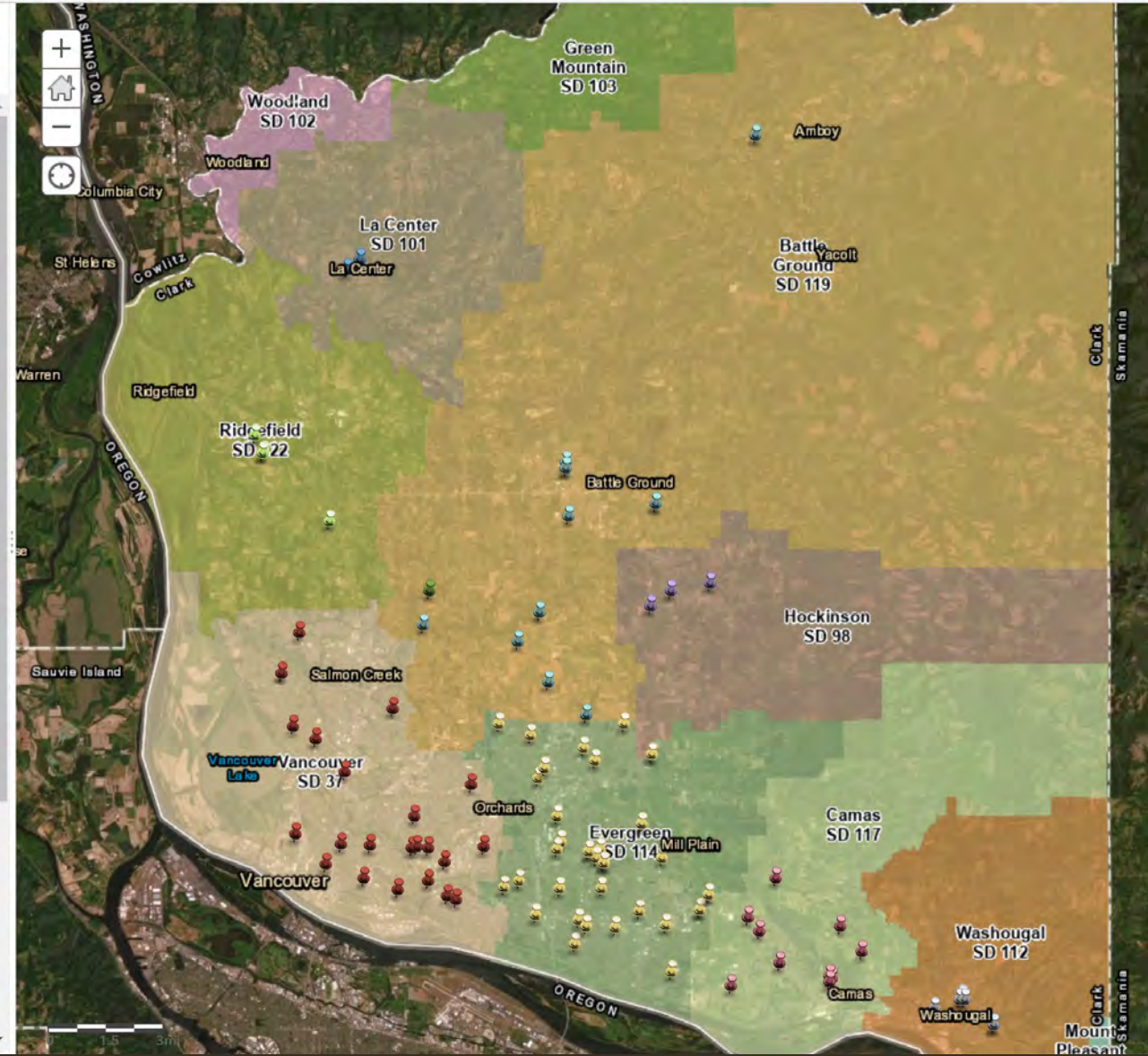


The Gardner School of Arts and Sciences

School District

School District

- Battle Ground
- Camas




PROGRAMS

How to activate the spaces

Green Teams

clarkgreenschools.org/blog/2022-clark-county



CLARK COUNTY GREEN SCHOOLS

What We Do ▾

Clark County Green News


Current Green Schools news, articles and information

Home Categories Tags

Print

2022 Clark County Virtual Student Summits - May 20th and 25th

News · Samantha Springs · Friday, 29 April 2022 · 62 Hits



HOW CAN YOU SAVE "POPCORN" EVERY DAY?

There's nothing more delicious than popcorn. But popcorn is also a source of waste. Popcorn is made from corn, which is a renewable resource. However, the production of popcorn is a highly energy-intensive process. The production of popcorn is a highly energy-intensive process. The production of popcorn is a highly energy-intensive process.

Can you guess what food has the most greenhouse gas footprint?

We're excited to see you at our Virtual Student Summits with EarthGen in May! Like last year, we will have two Summits: one for middle and high school students and one for elementary school students.

PROGRAMS

How to
activate the
spaces

Teacher
training

CCGS is a program of our County's Public Health Department but purposefully does NOT look like a government web page

clarkgreenschools.org/blog/join-us-for-the-winter-educator-training-feb-3



CLARK COUNTY
GREEN SCHOOLS

What We Do

Join us for the Clark County Virtual Winter Educator Training - Feb. 3

News · Samantha Springs · Wednesday, 22 December 2021 · 199 Hits

The Clark County Green Schools team and EarthGen are looking forward to seeing you at our Virtual Winter Educator Training on Thursday, February 3rd from 4-5:30pm. At this training, you will connect with other educators from around the county and receive the tools and resources you need to complete your certification projects. Plus, you'll learn about a new certification category we are super excited about!

Register for the training [HERE](#). Please contact Shannon Brennan at shannon@earthgenwa.org with any questions about the training.

We can't wait to see you there!



Clark County Winter
Educator Training

PROGRAMS

How to
activate the
spaces

Celebrating
successes



What We Do ▾

2021 Green Apple Award Winner

This award is presented to an individual that works in schools and inspires students to learn about the environment and to practice sustainability at school and at home.

Nancy, an employee at Lacamas Lake Elementary School, engages students and motivates them to compost, recycle and conserve energy at school, instilling an enthusiasm for school involvement and for the environment.



PROGRAMS

How to activate the spaces

Lower Columbia Nature Network partners



Partners provide spaces to wander, programs to engage and activities to inspire. Visit their web sites for more information.



PROGRAMS

How to activate the spaces

Lower Columbia Nature Network partners

Learn how our partners can help meet your curricula goals:



Visit our sites

These partners have facilities for your students to visit for hands-on learning:

CASEE Center - Classrooms, greenhouses, arboretum, pond, creek, forests and trails

City of Vancouver's Water Resources Education Center - Interpretive center, environmental education classrooms, wetlands, outdoor classroom, native gardens and Columbia River Trail

Columbia Springs - fish hatchery, trails and environmental education classrooms

U.S. Fish & Wildlife Service Refuges - Ridgefield and Steigerwald Lake Refuges offer trails, interpretive features and guided trips



Take a field trip

Join these partners for fields for hands-on learning and stewardship opportunities:

City of Vancouver Parks - Visit one of the many local and community parks and trails, including Volunteer opportunities

Clark County Parks - Visit one of our many sites for learning, play or stewardship with the Volunteer program

Clark Public Utilities Stream Team - Trip opportunities for stewardship plantings, potting plants and environmental education

Lower Columbia Estuary Partnership - Trip opportunities vary for hikes around Vancouver Lake to stewardship plantings along our



In the classroom

Educators visit your classroom to share expertise on a wide range of outdoor topics:

City of Vancouver's Water Resources Education Center - Student watershed monitoring network program and curriculum

Clark County Clean Water Program - Learn about stormwater protection, watersheds and environmental protections

Clark County Green Schools - Several resources to support Green Teams, environmental storytelling, composting and school gardens

Columbia Springs - Salmon in the classroom program and curriculum

Lower Columbia Estuary Partnership - A variety

PROGRAMS

How to activate the spaces

Lower Columbia Nature Network partners



Borrow a lesson kit

Our educators have put together lesson kits on a variety of topics to help students learn science:

Clark County Clean Water - The Enviroscape watershed model is an interactive tool for water movement and quality, student activities sheets

Fort Vancouver Regional Library - Discover Washington backpack kits field with field guides, binoculars and adventure gear

Lower Columbia Estuary Partnership - Kits on watersheds, streams, wildlife and schoolyard scavenger hunts

U.S. Fish & Wildlife Service - Kits that teach about wildlife and conservation

Vancouver Audubon Society - Kits help teach about birds, habitat and nature.

WSU Extension Master Gardeners - Learn about soils, gardens, food and insects with interactive kits



School grounds & garden

Partners can help support the planning, design, installation and programming of school grounds and garden projects:

City of Vancouver Urban Forestry - Learn about tree planting opportunities on school campuses and at community events

Clark Green Schools - A list of resources and events to help schools add more green to school grounds

Watershed Alliance of SW WA - Backyard Habitat Certification program, technical assistance to review site to restore school grounds with native plants and habitats

WSU Extension Master Gardeners - Trained volunteers support curriculum in the classroom and gardens at schools

Plant Lists & Ideas - there are numerous resources to help with plant lists, including **Green Schoolyards PNW Plants** (including types of gardens), **WA Native Plants**, and **Portland Nursery Native Plants**.



LCNN School support

LCNN is working to build a network of schools for peer to peer networking and support:

School garden tours - In partnership with WSU Extension Master Gardeners, tour local school gardens for tips and ideas for school gardens

Peer Quarterly Workshops - Join school garden teachers and community for focused meetings to support on-site improvement ideas, curricula and programming

School garden stewardship support - LCNN partners support volunteer stewardship events seasonally to support gardens (post-COVID restrictions)

Student mentoring & internships - Partners work with schools for community service and CTE projects, including volunteering, skills building and project implementation

PROGRAMS





How to activate the spaces

Lower Columbia Nature Network partners

lowercolumbianaturenetwork.org/toolkit

Take your teaching outside

The LCNN Partners can help you learn how to create inspiring spaces that encourage discovery and wonder, as well as how to successfully build outdoor learning opportunities



Webinars, Workshops, Trainings

Learn with our regional Partners on how to teach outside, plan and implement your campus improvements:

- Connecting to Curriculum** - teaching outdoors (with Mark Watrin and Kris Potter, Battle Ground Schools)
- Greening of Schoolyards** - planning and implementing improvements (with Jane Tesner Kleiner, Lower Columbia Nature Network)
- Composting on Campus** - learn about composting options and techniques (with Pete Dubois, Clark County Public Health)
- Ecosystems on Campus** - learn from

Curriculum Resources

There are local, regional, state and national resources to help teach outside, including social-emotional, STEM and more:

- WA OSPI** - outdoor learning resources
- E3 Washington** - resources for environmental and outdoor learning
- Lower Columbia School Gardens** - The LCSG has successful gardens throughout Longview and Kelso schools. Resources include **Growing Guides** and **Lesson Plans**
- WSU Extension Master Gardeners** - school planning and garden lesson plan resources
- An Educator's Guide to Vegetable Gardening** - Oregon State University Extension brochure

School Garden Tours

Learn from other schools in our community with their on-site garden tours:

- Clark County Green Schools - School Garden **map**
- EPS Illahee Elementary learning garden**
- VPS Hazel Dell Elementary learning gardens**
- EPS Frontier Middle School Greenhouse and gardens**

Funding & Grants

There are a variety of local, regional and national partners that can help support your projects

Local (Vancouver, Clark County, SW WA):

- City of Vancouver Urban Forestry** - depending on your location, support with tree plantings
- Master Gardener Foundation of Clark County** - Horticultural education and school gardens
- Vancouver Watershed Alliance** Sustainability Grants - City of Vancouver, neighborhood supported
- WSU Extension** - School garden resources and funding information

PROGRAMS

How to activate the spaces

Lower Columbia Nature Network partners

Ecosystems on Campus - learn from Partners about tips and resources for increasing habitat on campus and teaching outdoors (with Jessica George, City of Vancouver, Urban Forestry; Chris Hathway, Lower Columbia Estuary Partnership; Bethany Wray, Watershed Alliance of SW WA; Kris Potter, River HomeLink)

Maintaining School Gardens - learn tips and techniques to keep your garden successful (with regional teachers)

Rethinking Recess - learning about options for recess and after school programs (with regional teachers)

Drip Irrigation - there are some great resources for installing school garden drip irrigation, including [RainBird's Drip Guide](#), [School Garden Support Organization webinar](#) and [Drip Guide](#) with [University of Arizona School Gardens](#).

Extension brochure

Gardens for Learning - by the California School Garden Network

US Gifford Pinchot Forest Service - lesson resources about the forest, Mt. St. Helen's and other

Columbia Springs - Salmon in the Classroom - teacher activity guides and lessons

Accessible school garden signs - this curriculum walks through the considerations to make signs that work for all abilities

and funding information

Regional (SW WA, Vancouver-Portland area, WA state):

Washington Department of Agriculture - list of garden and school farm grants

Washington Native Plant Society - education and planting grants

Clark County Green Schools - comprehensive list of local, regional, state and federal grants & funding opportunities.

National:

Kids Gardening - a national program that supports education through gardening

Whole KIDS Foundation - School Garden grants



PROGRAMS

How to
activate the
spaces

Supporting
schools day to
day

Green Schoolyard Stewardship

School supported:

- Green Team project
- Recess program
- After school club
- Teacher project
- Class community Service
- Field Day project
- Planting days
- Lady bug day

Combo:

- Master Gardeners
- Foundation funded grant garden coordinator
- Master Garden Foundation supported garden coordinator
- Teacher trainings
- Garden tours with stewardship
- CTE Projects

Community supported:

- Annual volunteer clean up days
- No-spray school commitment (3 clean up days / year)
- Volunteer group (Young Marines, HS Key Club, local business)
- City / County partnerships (i.e. tree plantings/ naturescape) to meet City Climate Action goals
- Partner with local nurseries / [plant based orgs](#)

PROGRAMS

How to activate the spaces

- Recess activities
- After school club
- Special projects

Love of nature blooms at Hough Elementary School

Horticultural therapist aids students' growing curiosity in environment

By Jerzy Shedlock, Columbian Breaking News Reporter

Published: October 17, 2018, 6:05am

Share:     



PROGRAMS

How to activate
the spaces

3-year grant
from Master
Gardener
Foundation for
SGC

CAHNRS | EXTENSION | CLARK COUNTY

WASHINGTON STATE UNIVERSITY

Home

Programs

- 4-H Youth Development Program - Clark County
- Food Safety & Nutrition
- Horticulture
- Small Farms & Agricultural Businesses
- Master Gardeners
 - Overview
 - Become a Master Gardener
 - Community Education**
 - Partners
 - Support Us
- Natural Resources
- Heritage Farm

Program Impacts

Volunteer Opportunities

Heritage Farm Community Gardens

Contact Us

Clark County - co.gov ↗

WSU Publications ↗

Facebook, Twitter, YouTube, +

School Garden Coordinator Resources

Master Gardener Program

Erika Johnson, Program Coordinator
erika.d.johnson@wsu.edu
(564) 397-5738

School Gardens

***A School Garden** is an outdoor classroom; a living laboratory where children plant, care for and harvest seeds and knowledge. It can be public or private, one single raised bed or many.*

[Benefits of School Gardens](#)

[Getting Started](#)

[Design the Garden](#)

[Funding](#)

[Sustaining Your Garden](#)

[Garden Lessons and Activities](#)

[Hazel Dell School & Community Garden News & Events](#)

PROGRAMS

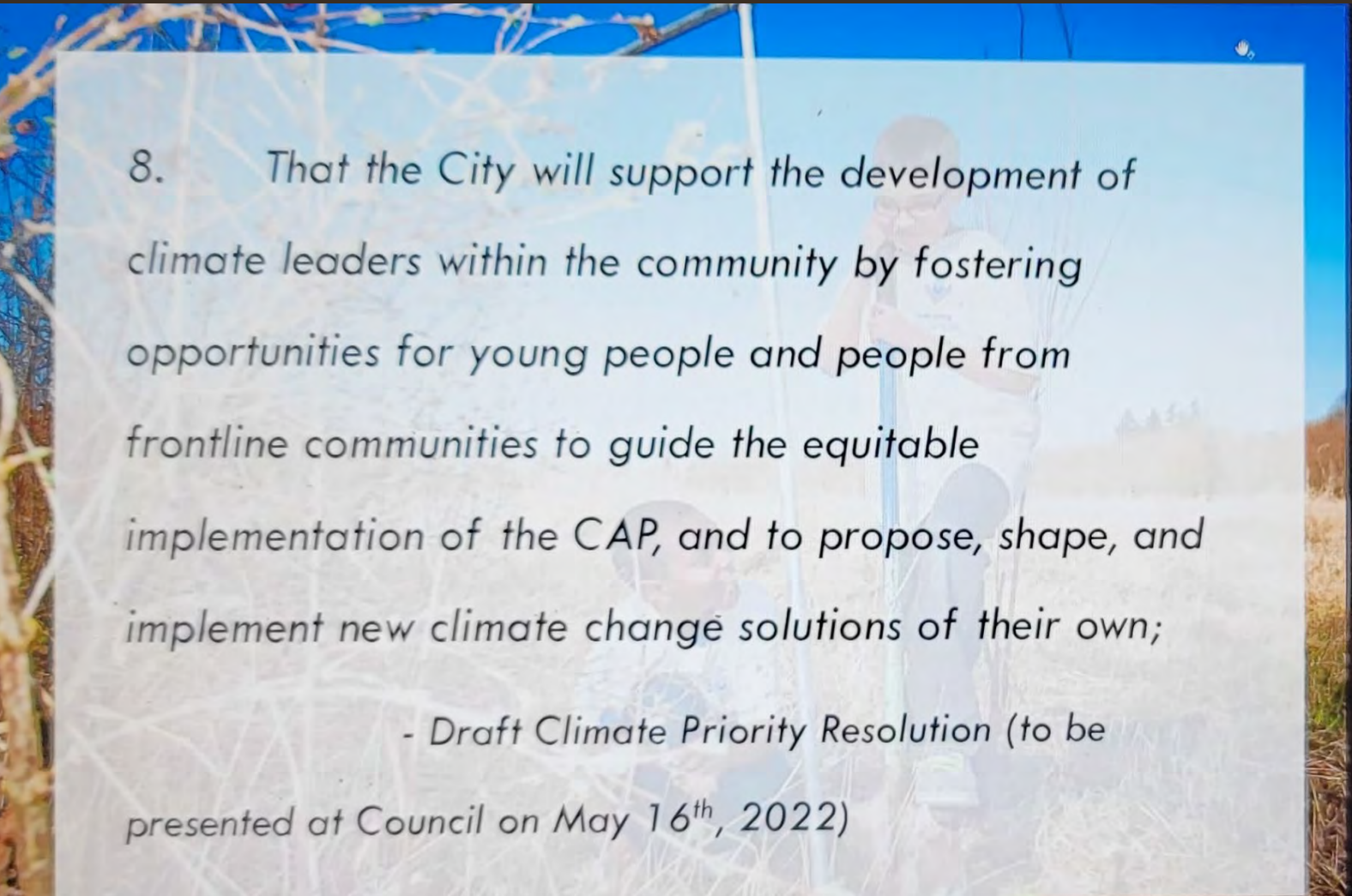
**What other programs are you using
to activate spaces?**

**How to
activate the
spaces**

What's next?

Cities
Connecting
Children to
Nature
2021 Cohort

Partnering with Vancouver



8. That the City will support the development of climate leaders within the community by fostering opportunities for young people and people from frontline communities to guide the equitable implementation of the CAP, and to propose, shape, and implement new climate change solutions of their own;

- Draft Climate Priority Resolution (to be presented at Council on May 16th, 2022)

Climate Action Plan – GOSY

What's next

CLIMATE
ACTION

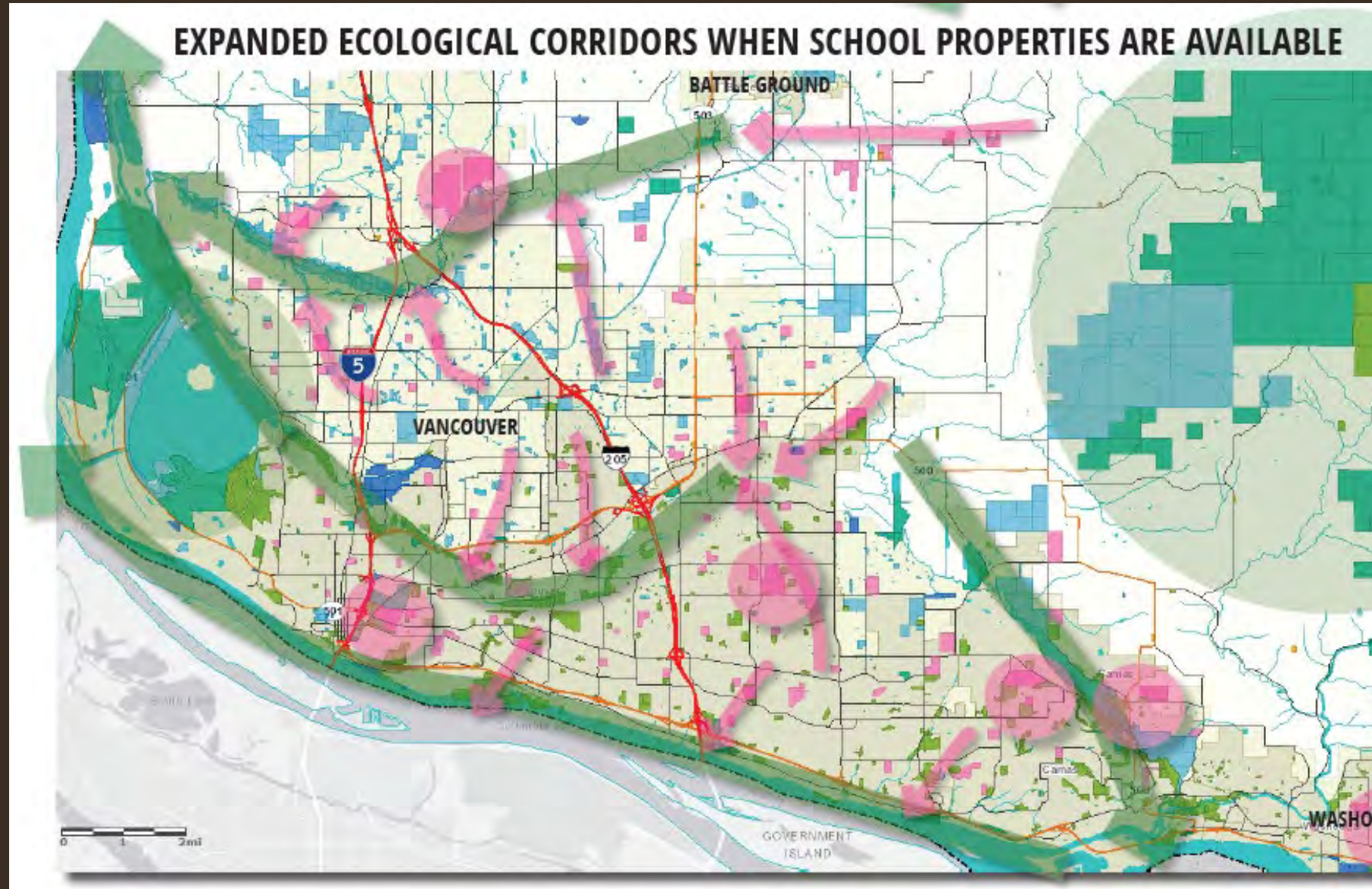
Tree equity

Wildlife habitat

Nearby nature

Green

Infrastructure



What's next

School Improvement Project approvals

BUILDING IMPROVEMENT REQUEST

VOLUNTEER CAMPUS IMPROVEMENTS

OVERVIEW

Evergreen Public Schools (EPS) support volunteer lead projects that enhances the play, learning and wellness of the school community. EPS Facilities and Grounds will review and approve projects for each school. The following is a list of acceptable project types. Volunteers must review the parameters as outlined per the item and submit for Principal approval. The Principal will then submit the project through the EPS Building Improvement Request (BIR) internal process.

INDEX OF PROJECT TYPES

Pathways & Connectors	2	Gardens & Raised Boxes	15
Pavement Play	3	Butterfly Garden	16
Sport Court & Games	4	Sensory Garden	17
Adaptive Play Features	5	Herb Garden	18
Sensory Play Features	6	Habitat Garden	19
Fitness & Exercise Stations	7	Tree Plantings	20
Music Equipment & Stations	8	Art & Signage	21
Outdoor Library Station	9	Nature Play Spaces	22
Seating	10	Imagination Play Features	23
Work Tables & Spaces	11	Loose Materials Play Spaces	24
Outdoor Classrooms	12	Games & Other Fun Ideas	25
Stormwater feature	13	Campus Care & Stewardship	26
Learning features	14		

What's next

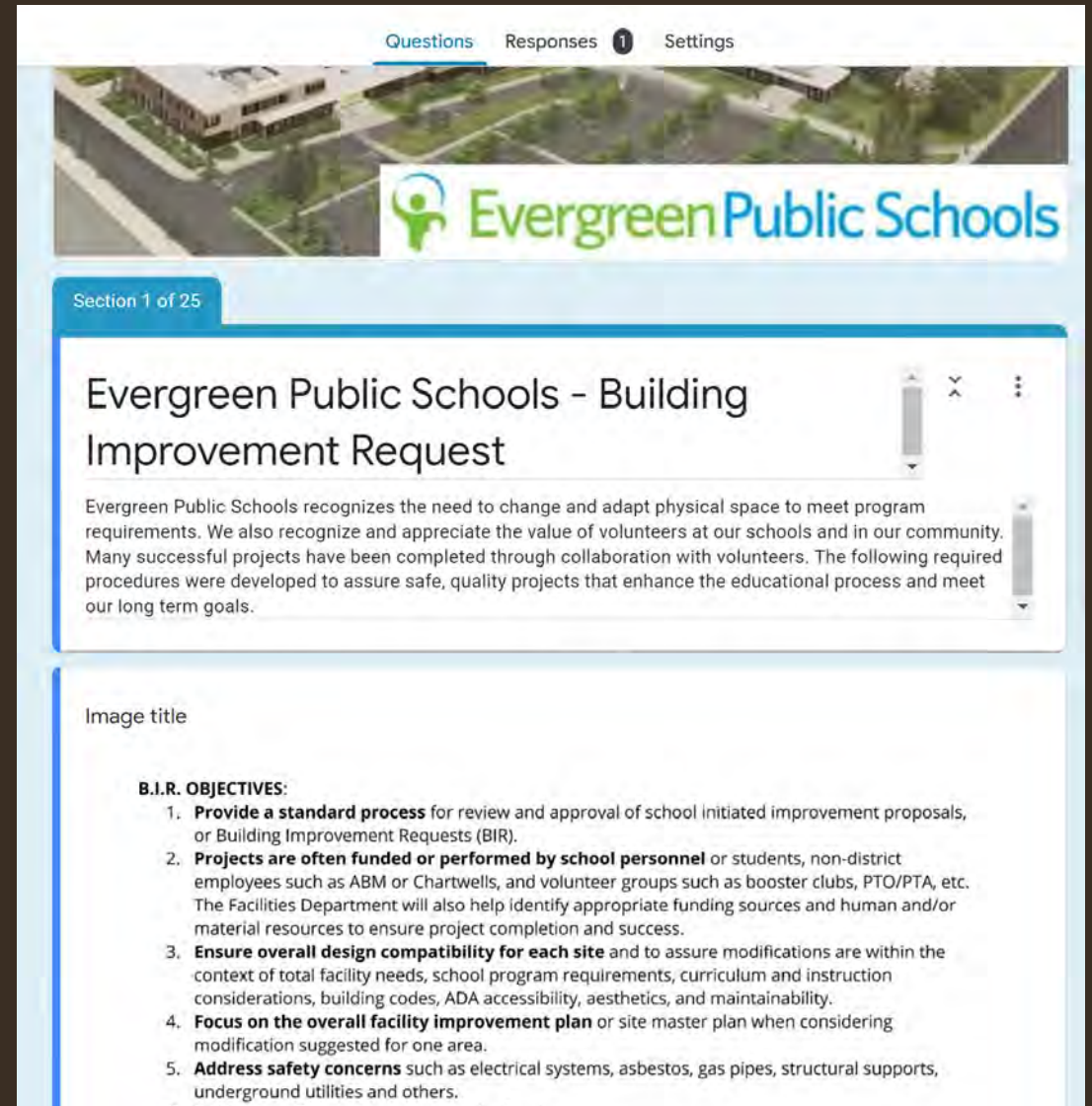
School Improvement Project approvals –

Define process and create efficient review process

Using Google forms for project applications –

Allows the applicant to pull together information to expedite approvals

Linked to tracking spreadsheet and form/doc



The screenshot shows a Google Form interface for Evergreen Public Schools. At the top, there are navigation tabs for 'Questions', 'Responses' (with a count of 1), and 'Settings'. Below the navigation is a header image featuring an aerial view of a school building and the 'Evergreen Public Schools' logo. The form is titled 'Section 1 of 25' and 'Evergreen Public Schools - Building Improvement Request'. The main content area contains a paragraph of text explaining the school's recognition of the need to change and adapt physical space to meet program requirements, and the value of volunteers. Below this text is a section titled 'Image title' followed by a list of 'B.I.R. OBJECTIVES' with five numbered items.

Questions Responses 1 Settings

Evergreen Public Schools

Section 1 of 25

Evergreen Public Schools - Building Improvement Request

Evergreen Public Schools recognizes the need to change and adapt physical space to meet program requirements. We also recognize and appreciate the value of volunteers at our schools and in our community. Many successful projects have been completed through collaboration with volunteers. The following required procedures were developed to assure safe, quality projects that enhance the educational process and meet our long term goals.

Image title

B.I.R. OBJECTIVES:

1. **Provide a standard process** for review and approval of school initiated improvement proposals, or Building Improvement Requests (BIR).
2. **Projects are often funded or performed by school personnel** or students, non-district employees such as ABM or Chartwells, and volunteer groups such as booster clubs, PTO/PTA, etc. The Facilities Department will also help identify appropriate funding sources and human and/or material resources to ensure project completion and success.
3. **Ensure overall design compatibility for each site** and to assure modifications are within the context of total facility needs, school program requirements, curriculum and instruction considerations, building codes, ADA accessibility, aesthetics, and maintainability.
4. **Focus on the overall facility improvement plan** or site master plan when considering modification suggested for one area.
5. **Address safety concerns** such as electrical systems, asbestos, gas pipes, structural supports, underground utilities and others.

What's next

Messaging

Get the word out about GOSY projects that are in the grounds

Celebrate projects

GREEN SCHOOLYARDS

In partnership with Vancouver Public Schools



Diverse Play

Accessible routes
New & fun features
Active & challenging structures
Passive hands-on play
Quiet play & seating

- All schools:
 - Rubberized play surfacing
- Upgrades:
 - Hough - fully accessible playground structures
 - Sacajawea - new covered play
 - Kiggins Bowl - updates
- New schools:
 - Fully supported swings
 - Biggo disc swings
 - Music stations
 - Accessible ramps
 - Sensory digging boxes
 - Nature play logs
 - Paved loop paths
 - Covered play / ball sports



Upper Body Challenge - Ogden



K-2 Play - Truman



Kinder Play Courtyard - Ogden



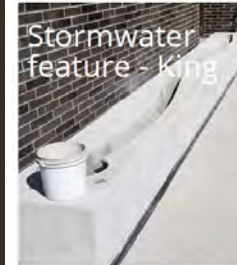
New features - Walnut Grove

Enhanced Outdoor Learning



Outdoor classrooms
Various seating
Learning features
Interpretive signage
More habitat plantings
Accessible routes

- New schools:
 - Seating areas for full classes
 - Seating areas for small working groups
 - Raised garden boxes
 - Butterfly gardens
 - Native habitat gardens
 - Diverse tree plantings
 - Sensory gardens
 - Support materials for outdoor learning (carts, tools, equipment)
 - Rock gardens
 - Unique learning features



Stormwater feature - King



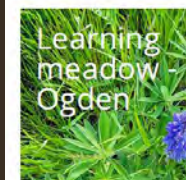
Outdoor classroom - Truman



Outdoor classroom & sensory garden - King



Gardens - Ogden



Learning meadow - Ogden

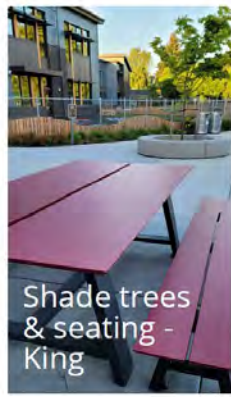


What's next

Messaging

Get the word out about GOSY projects that are in the grounds

Celebrate projects



QUICK FACT:

1,200+ trees planted at new schools

Will add over 13.5 acres of shade on campuses

Lots of great momentum in the past 10 years.....

Keep the momentum building and growing!

Changing perspectives....

Look for opportunities to add natural elements to explore & discover

Work with community partners

Involve students to plan, design, build and maintain their school's backyard

What do you see?



GREENING of SCHOOLYARDS

Thank you for your time today!

Jane Tesner Kleiner

Vancouver, WA

www.natureplaydesigns.com

natureplaydesigns@gmail.com

